

**silpa** Raghava



FUTURE IS HERE

# Premium Luxury Villa Plots @ Pharma City

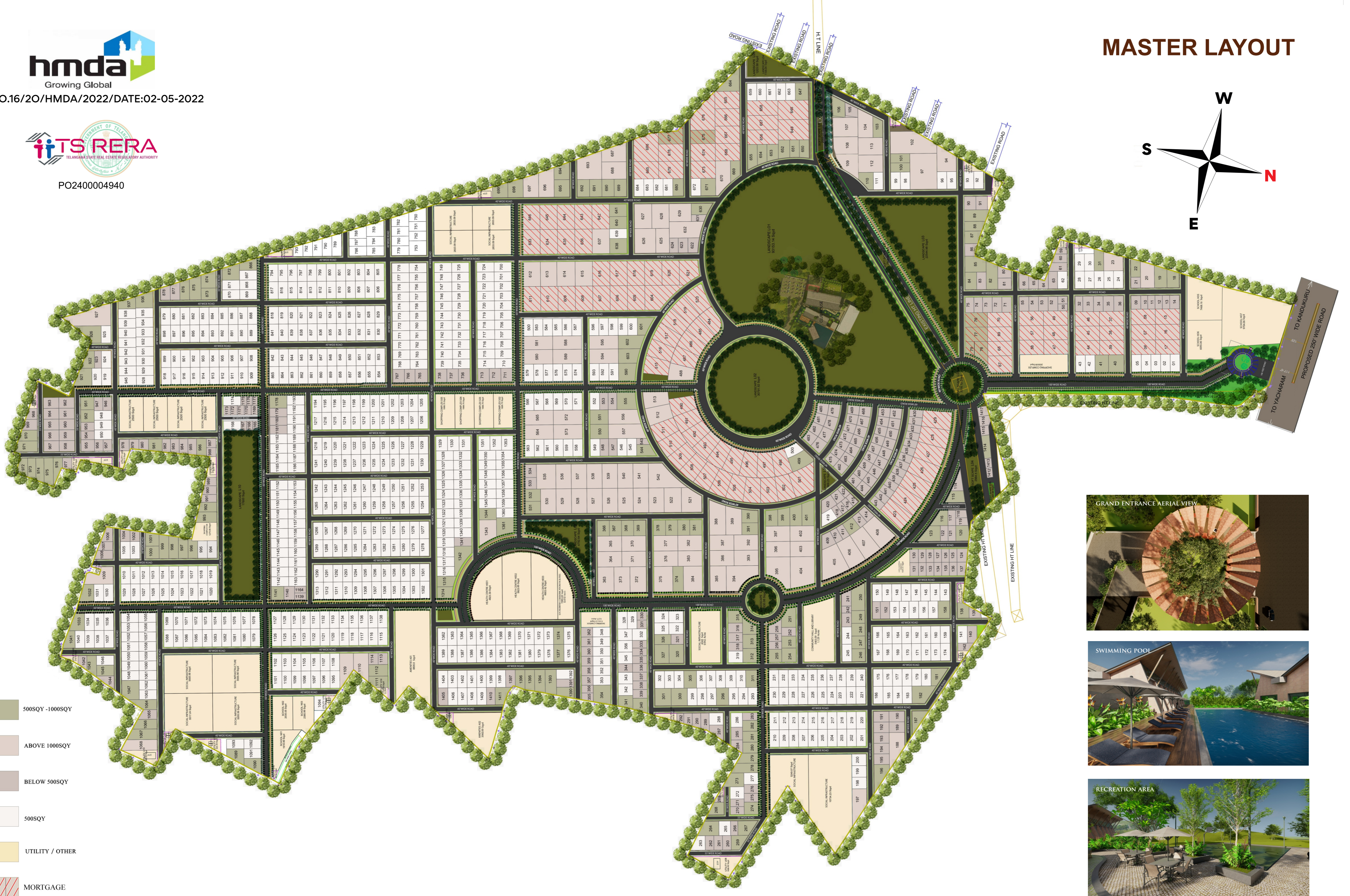
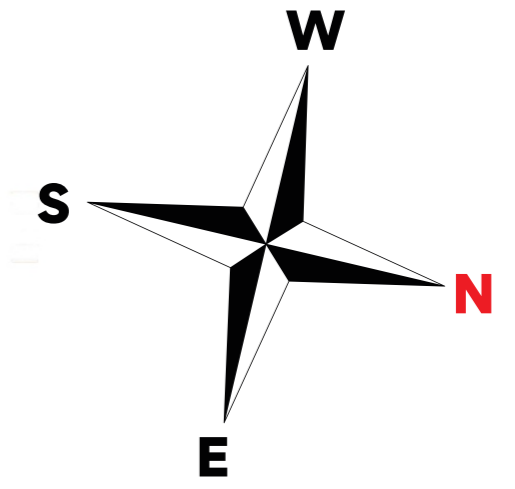
SILPA RAGHAVA LLP.,

[www.silparaghavabotanica.com](http://www.silparaghavabotanica.com)





# MASTER LAYOUT



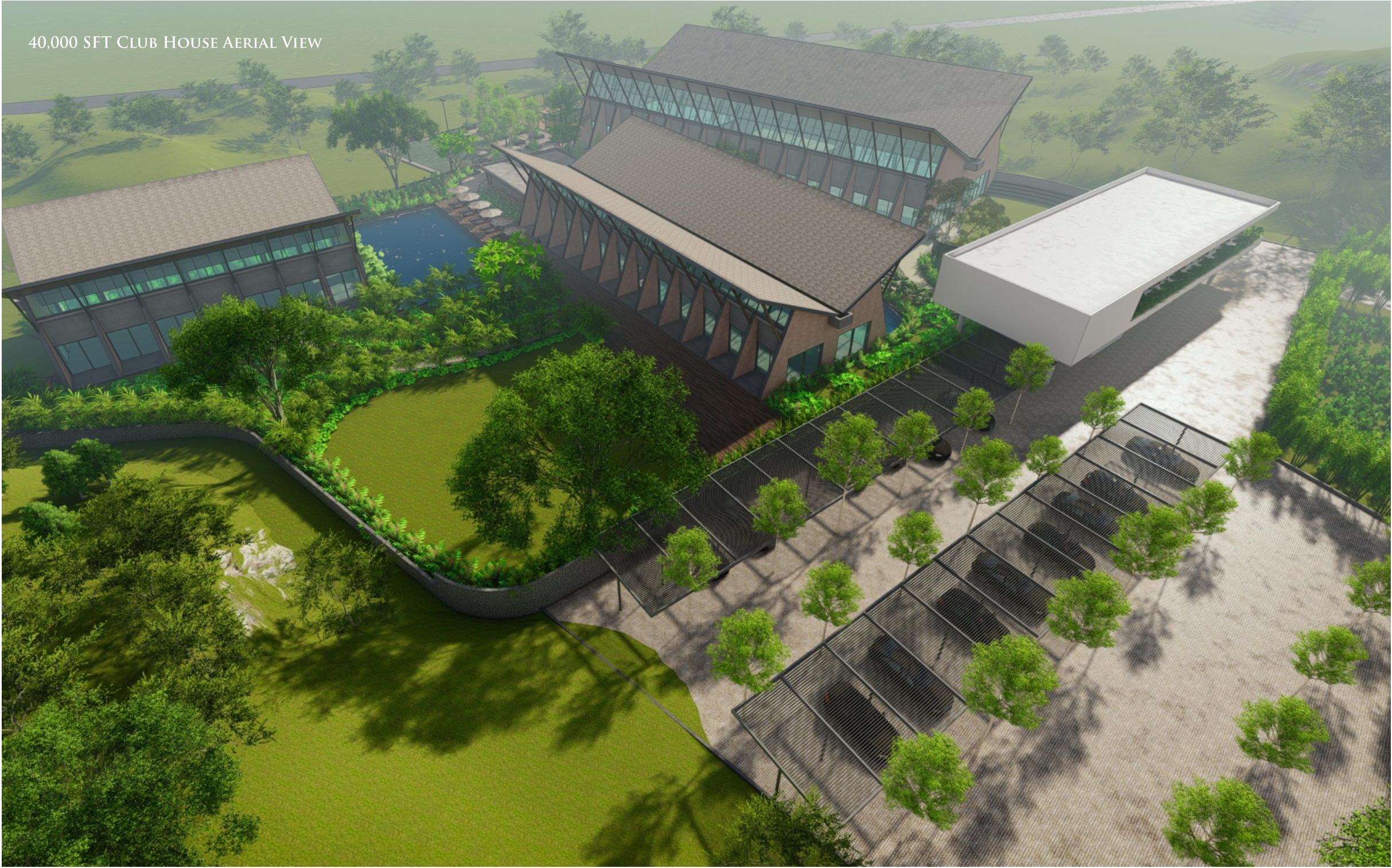
## PROJECT HIGHLIGHTS

Integrated Luxury Gated Community	HMDA & RERA Approved	331 Acre Mega Project
1411 Premium Luxury Villa Plots	Abutting to Pharma City	100+ World Class Amenities
Promising Investment Zone	40,000 SFT Club House	Sustainable & ECO Friendly

## AMENITIES

Grand Entrance Arch	100FT, 60FT, 40FT Wide BT Roads	Level 5 Security	Wellness Center & Resort With Pristine Ambiance	Half Olympic Size Swimming Pool	Biophilic Gardens	Open Party Lawn
State of the art Luxury Rooms	Cycling Track & Jogging Track	Banquet Hall & Conference Hall	Sports Arena	Mini Golf	Restaurant & Bar Counter Overlooking Pool	Spa
Mini Movie Theater	Amphi Theater	Zumba & Yoga Studio	Life Sized Chess	Sensory Walkway	Miyawaki Forest	Barbeque And Campfire Zone





## Location Highlights

- 03 minutes drive to Amazon Data Center
- 07 minutes drive to Kandukur
- 15 minutes drive to Bhashyam Blooms The School
- 19 minutes drive to Mankhal Industrial Development Area
- 20 minutes drive to E-City
- 20 minutes drive to Sri Sri Academy
- 21 minutes drive to Tukkuguda
- 23 minutes drive to Maheshwaram
- 30 minutes drive to Rajiv Gandhi International Airport
- 30 minutes drive to The Aga Khan Academy
- 35 minutes drive to TCS Adibatla
- 50 minutes drive to Gachibowli, Financial District and IT Corridor

ETA as per Google Maps\*

A PROJECT BY

# silpa Raghava

IN ASSOCIATION WITH



PMC

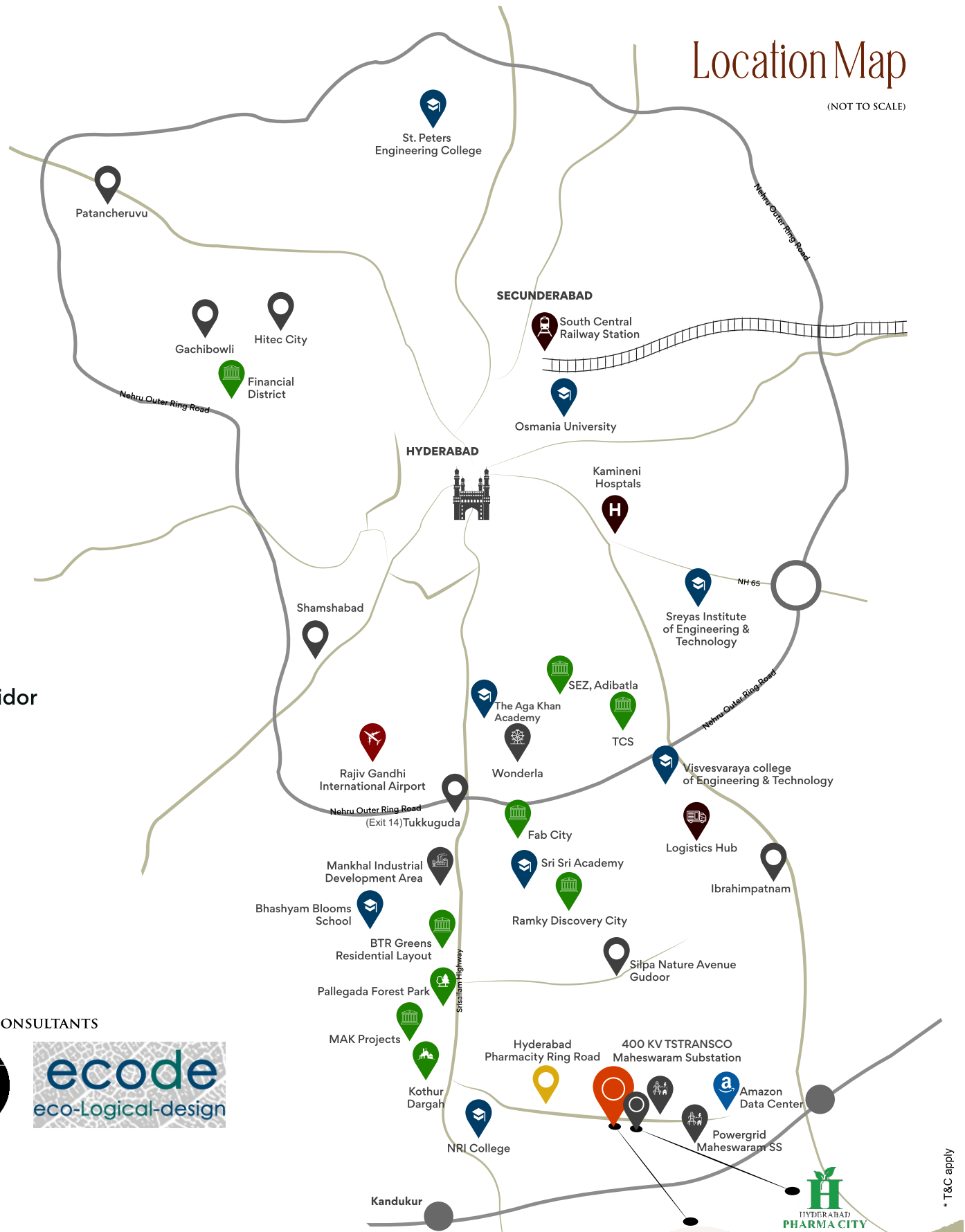


DESIGN CONSULTANTS



## Location Map

(NOT TO SCALE)



\* T&C apply

## SILPA RAGHAVA LLP.,

[www.silparaghavabotanica.com](http://www.silparaghavabotanica.com)

